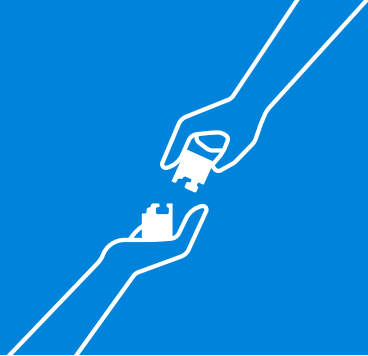


**WORK
ANYWHERE**
with Bluebeam Revu



A blueprint for better collaboration

Architecture, engineering and construction (AEC) are fast-moving industries. An era of rapid digitalisation is upon us, and it's more important than ever in this globalised economy to leverage that technology toward smarter, easier collaboration. Here are some tips to get the most out of collaboration and communication, so that you can be more efficient and productive – allowing you to focus on what really matters: getting the job done.



Communication

90% of construction professionals say it's important to collaborate digitally.

Collaboration can be an intimidating word. But really, it all boils down to communication. The construction industry is changing at a rapid pace and, along with it, the technology we use to build our world. But don't let the abundance of options out there bog you down. What you really need are tools that make communication easier. That's especially true in a global economy, where architects, engineers and builders often work together on one project across continents and time zones.

It's sometimes impossible to have all the stakeholders sitting down in the same room, which is why it's critical to take advantage of benefits like the Studio capabilities in Bluebeam® Revu®. Studio allows collaborators across the world to "sit down" in a meeting and talk with each other. All while looking at the very same document on their computer screens, in real time.

A survey by [Construction Manager Magazine](#) of nearly 200 AEC professionals found that fewer than 20% of respondents were confident in their company's ability to collaborate throughout the BIM process. Yet, 90% of the professionals said it's highly important to collaborate digitally. Studio in Revu helps bridge the gap, making it easy for firms to achieve BIM Level 2 compliance. Give your people the tools they need to succeed.



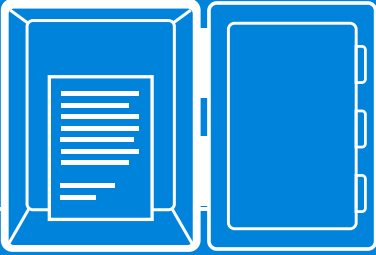
Access anywhere, anytime

95% of respondents in the Construction Manager survey say it's important to be able to work whenever, wherever.

It's vital that team members can access the most accurate data, anywhere, anytime. From the office to the home, the jobsite to the hotel room, 95% of construction professionals surveyed in Construction Manager said they need access that fits their schedule, so they and their [teams can be efficient and effective](#).

This can be especially important to the new generation of workers, which has grown up surrounded by mobile technology. With the UK construction industry facing a 20–25% decline in the AEC labour pool in coming years, you'll need to do everything you can to [attract the right talent](#).

Revu makes drawings, documents and data accessible anywhere, anytime, on tablet or laptop, in the office or at home. Plus, you save money on printing and shipping costs, and don't have to worry about where to store unwieldy drawings or try to read an elevation beneath layers of grime, coffee stains and pencil edits. Being able to work on the go often shaves weeks and even months off of project schedules. One [UK engineering firm](#) that embraced the collaboration capabilities in Revu achieved a 60% increase in efficiency in their production process. They've been able to streamline processes, edit markups simultaneously and maintain drawing quality at a level previously unimaginable.



Single source of truth

Rework, on average, accounts for 9% of total construction costs. On a £5 million project, that's £450,000.

Working from a single reliable data source means that everybody on your project can access the most current, up-to-date information. Let's face it: though it's often a messy process, we're all used to emailing important information back and forth – whether that's project updates or the latest version of a drawing. But it's all too easy to lose track of things, and that leads to confusion, lost time and, in some cases, rework.

Having a single source of truth, such as a document set edited in Revu where all changes are tracked and logged, means that project partners can access the most up-to-date information without having to fish through long email threads. Building projects that can run into the millions or even billions of pounds are simply too valuable to risk having people on the wrong page, making changes to a floorplan or estimating takeoffs from an out-of-date document. Whether you've got a staff of two or 200, you know how miscommunication can throw a wrench into schedules and budgets. A [Navigant Construction Forum](#) research perspective entitled "The Impact of Rework on Construction & Some Practical Remedies" showed that rework, on average, accounts for 9% of total construction costs. On a £5 million project, that's £450,000 that didn't have to be spent. Having a single source of truth helps you find errors before they become costly.

Taking the next step

If you've made it this far, you're on the right track. The future is clear: firms that collaborate effectively will prosper. Those that maintain data siloes will face increasingly smaller profit margins and uncertainty, as the Farmer Review (aptly entitled "Modernise or Die") points out. Right now, only 28% of the respondents in the Construction Manager survey use software to meet BIM Level 2 requirements. There's a lot of room for improvement. And, there's reason to be optimistic. After all, now you know the three essentials for improving collaboration within your organisation:

- **Communication**
- **Single source of truth**
- **Access anywhere, anytime**

You also understand that better collaboration can lead to faster project delivery times, reduced rework and great profits. Are you ready to take the next steps? Revu is the leading technology solution that sets the standard for project efficiency and collaboration for AEC professionals worldwide. Go to bluebeam.com/uk/trials to download a free trial today. Already own a license of Revu but new to Bluebeam Studio? Get the full overview with our "[Getting Started With Studio](#)" video.



Revu offers

An effective solution bridging the gap between the office and home.

Best-in-class markup and editing capabilities.

BIM Level 2 compliant capabilities through Bluebeam Studio.

Repeatable, customisable processes that make you more efficient.

