

**Worldwide Leading
Laser Engraving Technology
Speedy 300**

setting
new
standards



Superior laser engraving has a name: **Trotec Speedy 300**

**Your
Investment**

Productivity & Performance

Trotec lasers are the fastest and most productive systems on the market. We have continued to improve the performance of our motion systems so that we can now achieve a top speed of **355 cm/sec., or 140 inches/sec.**, with an acceleration of **5 g.**

Your benefit: You can produce 30% – 100% more than competitive systems—every day—without sacrificing quality and this translates to higher profits. Better performance combined with the highest possible quality at prices that are surprisingly affordable. Performance, productivity, quality and reliability add up to a lower total cost of ownership—this means value when you choose Trotec.

**Your
Return**

InPack-Technology™

- **Maximum protection from dust & other contaminants**
- **Ultra long lifetime—less maintenance**
- **Highest quality components**
- **High-speed, stainless steel, self-lubricating linear bearings**
- **Brushless DC servo motors**

InPack-Technology™ is a combination of the highest quality components for ultra long lifetime combined with protection of the optics and all sensitive components. Trotec systems are designed for minimal wear-and-tear. Our design and manufacturing quality standards make sure your **Speedy 300** will be ready for years of trouble free, heavy-duty production. You can forget the added costs of spare parts that need to be replaced regularly on competitors' systems. It all adds up to a lower total cost of ownership over the lifetime of each **Speedy 300** laser system.



Applications that will excite your customers



Architectural models



Promotional items



Glassware



Signs



Stamps



Name batches



Stainless steel

The **Speedy 300** is an excellent choice for the production of:

- architectural models
- barcodes
- office accessories
- trophies
- glassware
- greeting cards
- wood inlay
- name badges
- insignia
- seal presses
- serialization
- signs
- key rings
- writing instruments
- stamps
- type plates
- promotional items
- ... and many more

Materials that can be processed with **Speedy 300**:

	Engraving	Cutting	Marking
Acrylic	•	•	
Anodized aluminum			•
Cardboard	•	•	
Ceramics	•		•
Cork	•		
Delrin	•	•	
Fabrics	•	•	
Glass	•		
Laser rubber	•	•	
Leather	•		
MDF	•	•	
Melamine	•		
Micro porous rubber	•	•	
Painted metals			•
Paper	•	•	
Plastics	•	•	
Polyester	•	•	
Rubber	•	•	
Stainless steel			•
Stone	•		
Veneer	•	•	
Wood	•	•	

Speedy 300

Included Extras



- **InPack technology**

Protects dust-sensitive components such as the mechanical components, optical elements and electronics. Consequently, the Speedy 300 operates practically without any maintenance expense or part wear, even when utilized extensively! For you this means greater productivity at lower costs.

- **Working platform (ferromagnetic)**

The working platform of the Speedy 300 remains absolutely level. This always gives you uniform results over the entire working surface. In addition, it is ferromagnetically treated. This means that it is easy to mount thin materials like paper or films using magnetic retention.

- **E-commerce links**

Owners of uTypia Internet shops can access a special service: The online customer produces text, logos, etc., and sends the order directly to the JobControl software! If desired, the engraving may also be started automatically. Reduces effort in typesetting, job configuration and proofreading.



- **Bi-directional communication**

Connects a PC to your Speedy 300. This gives you full control of many laser functions at all times. You can start any engraving job without leaving your workplace. The screen acts as a “virtual laser”!





- **JobControl software**

Supports you perfectly in handling your engraving jobs. JobControl lets you utilize your computer's performance allowing access to the many useful and intelligent functions that make your work easier. For further details please refer to the "JobControl" brochure.

- **Control of the exhaust system**

Trotec exhaust system owners can automatically control this system via JobControl. For example, you can initiate the exhaust power before the start of engraving or after the end of engraving to optimize the removal of dust or fumes. You also get dynamic feedback on turbine activity and filter saturation.



- **Laser pointer**

A red laser pointer indicates the location at which the laser beam will contact the material. You can minimize the risk of faulty engraving by precise positioning of the job before engraving begins!

- **Variable interface**

As an alternative, the Speedy 300 may be connected to the computer via a USB or serial cable.



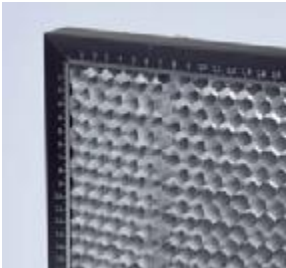
- **Auto-focus**

The Speedy 300 offers 3 different variants for optimal focusing on the material: Manual focus with focus gauge, electro-optical focus with photo-electric guards and via the Job Control software. In electro-optical auto-focus, the upward motion is stopped as soon as the inserted material breaks a light beam. In the case of software auto-focus, the machine computes the correct position of the working table based on the lens burn width and material thickness, and it automatically moves to the correct position.

Speedy 300

Options and accessories

In addition, you can select from a number of options and accessories. This lets you configure your Speedy 300 **precisely to your requirements**. At Trotec you only pay for what you really need. In addition, the machine can be upgraded with any accessories we offer.



- **Honeycomb table**

The reduced contact area of the material with the working table minimizes beam back reflection and yields perfect cutting results.

Smoke and air are exhausted downward. Minimizes potential damage to the bottom of the workpiece and reduces effort involved in cleaning the processed surface. Straight-edge rulers and mounting clips for precise positioning in the processing chamber are included.



- **Rotary engraving device**

For engraving cylindrical, conical or spherical objects such as bottles, glasses, balls or mugs up to 485 mm / 19" in length and 184 mm /

7.2" in diameter. The rotary engraving device can be purchased in cone or roll design (interchangeable) for maximum flexibility. It can even be tilted for conical or tapered objects. Just set it up in the processing chamber and plug in the cable. The JobControl software offers full support for quick and reliable results. Mounting clips and carrying handles offer additional support.

- **Supporting frame with storage bin**



Utilize the space beneath the laser system as a storage area. Important accessories such as engraving materials, basic engraving devices, etc. are ready to use when

needed. Helps to organize your production environment or your local shop.

- **Extended dust protection**

For reliable operation of your laser system, it is very important to protect dust-sensitive components such as motors and electronics. Unique InPack technology handles this. Extended dust protection protects programmable axes from dust too. It also offers supplemental protection if you usually process dust and debris producing materials such as rubber or wood.



- **Multi color option**

The Speedy 300 is the only laser system in the world you can use to produce customized color stamps. This means that you can perform engraving of stamp

text plates, cutting of pads and dyeing with one device! Clean, simple and reliable. A unique technology—only from Trotec.





- **Air Assist**

Protects the optics and improves cutting results in some applications. Utilizing air assist also prevents flame-up and improves exhausting of engraving dust. Fully controlled (activate/deactivate) via Job-

Control software. The Speedy 300 can be equipped with both coaxial and lateral air assist.

- **Fire sensor**

Some materials (e.g. acrylics) can flame-up in laser processing—especially during cutting operations. The fire sensor on the Speedy 300 reacts to this immediately. Sensors measure the temperature difference between the ambient air flowing into the machine and the air in the processing chamber. If a defined value is exceeded, an acoustic signal is output, and the running process is stopped immediately. This ensures the greatest possible safety for operating personnel and their lasers.

- **Lenses**



For perfect engraving and cutting results, lenses with different focal lengths may be used, depending on the application. The Speedy 300 may be equipped with a 1.5 inch, 2.0 inch, 2.5 inch or 4.0 inch lens. To prevent use of the wrong lens, the color of the lens holder (including focus gauge) indicates the burn width. The lens is changed simply by unscrewing the mounting wheel.

- **Exhaust systems**



An exhaust system is absolutely recommended for optimal operation of the laser, to protect the laser device, and to protect your employees. Trotec offers a variety of exhaust systems depending on the application. Special integrated electronics let you control the Trotec exhaust systems

remotely via JobControl software. For details on this please refer to the “Exhaust Systems” brochure.

- **Vacuum table**

Fixes various material to the working table using a light vacuum. This reduces handling effort associated with mechanical mounting (e.g. gluing, magnets) and offers even better engraving and cutting results. Especially well-suited to thin materials such as films, veneers, paper, and similar.

- **Laser power upgrade**

Whatever the power level of your current Speedy 300, it can be economically upgraded at any time to a higher wattage laser tube without requiring the purchase of a new machine. Upgradable up to 120 Watt. (note: depending on the upgrade levels, the input voltages may change)

Smart Software for Flexible Use



Only from Trotec:

Unmatched Control of Operating Parameters

JobControl is our unique print driver solution for managing work flow by providing more control over machine parameters, job positioning and historical data than any other system. The look and operator functionality can be modified to fit your methods of operation, not the other way around.

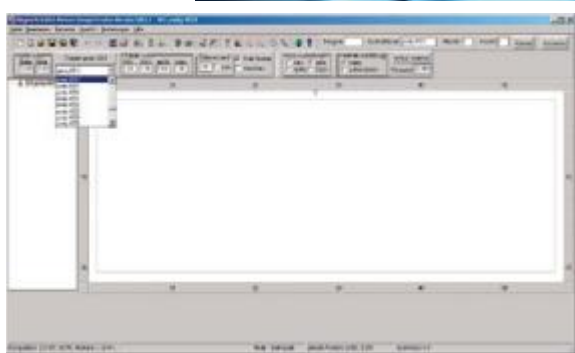
For additional information please refer to the "JobControl" brochure.

JobControl

- Change of parameters "on-the-fly"
- Material database with predefined parameters
- Software-autofocus enables precise focusing on the materials surface with only one mouse click
- Marker for precise positioning even for finest engraving jobs
- Engraver protocol helps to calculate costs and plan production schedules
- Reverse engraving—reduces cleaning of the workpieces (e.g. plastic signs)
- Smoothing of outlines—perfect curves and circular paths also from CorelDraw
- Vector sorting—automatically processes vectors in optimized order
- Multi Color function—for the production of textplates for Multi Color Stamps

And many more

JobCreator—The easiest way to create designs



The new JobCreator software from Trotec is type-setting software specially developed and optimized for stamp makers and engravers.

In three steps from layout to finished engraving.

- 1.** Select desired size from the product list.
- 2.** Insert texts, logos or graphics.
- 3.** Start engraving

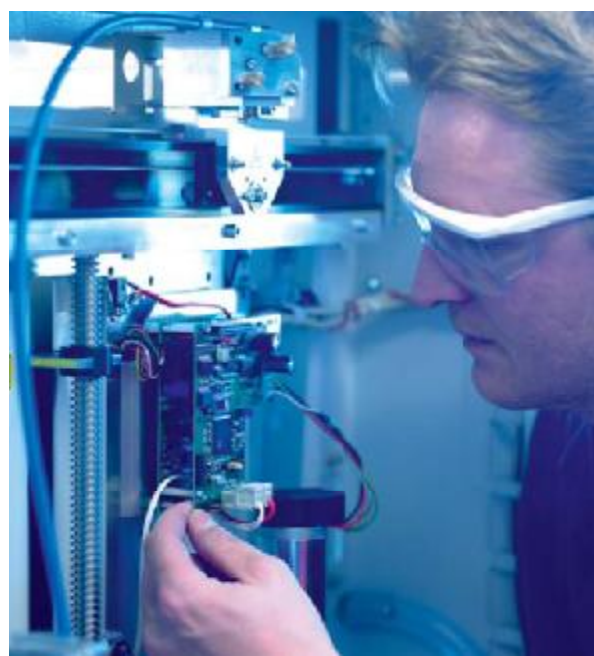
All functions are clearly organized and can be selected by mouse click.

Ask us for a free demo version!

Overview of special features:

- Predefined job sizes, easy to add new sizes
- Editing of objects (scale, position, distort, rotate, line weight, fill, invert, dashed lines, etc.)
- Direct interface to the Trotec printer driver and JobControl
- Automatic transfer of layout sizes for engraving job
- Individually definable shortcut commands for many functions
- Easy to convert text to circular text
- Automatic adaptation of line lengths to object width
- New text element created with Enter/Return key
- Automatic line spacing
- Address data (e.g. from stamp set) can be automatically transferred to address labels.

The technology of Speedy 300



• Overall dimensions (WxDxH)	1090 x 890 x 590 mm (42.9 x 35 x 23.2 inches)
• Max. dimension of workpiece	726 x 432 x 200 mm (29 x 17 x 7.8 inches)
• Processing speed	355 cm/second (140 inches/second), acceleration 5g
• Accuracy	Addressable accuracy: 5µm Static repeat accuracy: <± 15µm
• Mechanical design	Fully enclosed chassis with double safety interlock system Laser safety class 2 Drives with maintenance-free, brushless DC servo motors InPack-Technology™
• Laser	Sealed-Off CO ₂ laser from 12-120 watts
• Weight:	approx. 135 kg / 270 lbs (30 Watt model)
• Power requirements:	12 - 75 Watts: 230V / 50Hz or 115 V / 60 Hz From 85 Watts: 230 V / 50Hz

A Global Presence ... with Local Support



A history of success

Trotec lasers are used in over 90 countries worldwide. With thousands of installed systems, we offer a wealth of experience and expertise in laser engraving and industrial marking. Most importantly, we have earned the trust of our many international customers.

Our Trotec service partners in over 80 countries participate in training programs on a continuous basis—so we can always offer the highest level of professional maintenance services for your Trotec laser system.

In addition, our **JobControl** software offers the unique opportunity to evaluate the status of your laser installation via remote maintenance and diagnostics, in real time, so we can always guarantee maximum reliability and availability for your business success—both now and in the future.

A commitment to your satisfaction

Our goal is to pursue constant, user-oriented innovation. We are committed to always providing you with the perfect product for all of your marking application needs.

That's why we are committed to really knowing and understanding both the market, and our customers. As such, we invest continuously in product development and market research at our state-of-the-art application labs.

With smart devices, a motivated team of experts, and renowned customer service, we can consistently provide you with top-quality, leading-edge laser solutions at a competitive price.

Key questions to ask before making a laser purchase:

- **What components are used?**

Above all, look at the motors and mechanisms. High-quality components guarantee perfect engraving results over a long period of time.

- **Are sensitive components protected against dust?**

Lenses and mirrors are the primary components that can be damaged by dust. Therefore, they should be protected. This also saves you time and money in cleaning.

- **How long are warranty periods?**

The longer the warranty, the lower your financial risk.

- **Does the supplier offer a total package?**

A significant factor in achieving perfect results is the interplay of the laser system—exhaust system—software—material. If everything is provided by a single source, it is possible to optimally match package components to one another.

- **What laser software is implemented?**

Make sure that the laser software offers the properties and flexibility for also complex laser jobs.

- **Who makes installation, training and service?**

Make sure that a local contact is available. Then you can be sure that installation, training and service will proceed quickly and cost-effectively for you.

Linzer Str. 156
A-4600 Wels
Tel. +43 / 72 42 / 239-0
Fax +43 / 72 42 / 239-7380
trotec@trotec.net
www.trotec.net

trotec[®]
laser. marking cutting engraving